



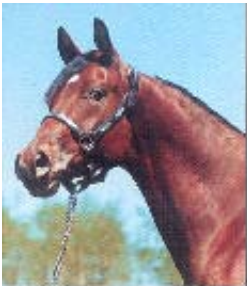
Canada Livestock Services Ltd

P.O. Box 2312,
Lloydminster, Saskatchewan Canada S9V 1S6
Tel: +1(780) 808-2815; Fax: +1(780) 808-2816
Email: canadalivestock@canadalivestock.com
www.canadalivestock.com



Canada

- internationally recognized source for superior livestock genetics
- recognized internationally for exceptional animal health programs
- a world leader in embryo and semen gathering and delivery technology
- genetics adapt well to many different environments



Livestock

- more than 30 breeds of purebred beef cattle
- Canadian Holsteins are internationally renowned
- over 20 breeds of sheep and goats
- purebred and hybrid swine breeds
- internationally recognized breeders of performance and pleasure horses
- heavy and medium weight draft horses
- diversity of alternative livestock species – , bison, elk, ostrich, emus, llamas etc.
- live animals, embryos and semen



Services

- selection and acquisition
- export quarantine and documentation
- transportation and insurance
- production and management consulting
- AI and ET supplies
- livestock handling & production equipment
- genetics market strategy development
- feasibility studies and business plans
- training and technology transfer
- study tours of Canadian livestock industry



Consulting Services

- herd and business management
- livestock feeding and nutrition
- animal health and veterinary
- genetic diversification
- breeding and selection
- equipment and supplies
- product processing and marketing
- animal husbandry training
- study tours, short courses seminars

Export Procedures and Animal Health

- ensuring export of healthy livestock is a priority for CLS
- all exports are supervised and documentation certified by Government of Canada (Canadian Food Inspection Agency - CFIA) veterinarians; all test performed by government accredited laboratories
- Canada's health regulations exceed international requirements
- Canada's climate is excellent for disease prevention

Canada Livestock Services Ltd. works in partnership with clients and suppliers to ensure your needs are met. Much of our business is by referral and we ensure satisfaction for our clients. We are fully prepared to supply excellent quality animals. Whether beef or dairy cattle, horses, swine, sheep, goats, ostriches, emus, llamas or any other alternative livestock, we will use our extensive network of contacts to meet your needs. When you call CLS, you will talk to one of the team and you can be assured your project will be personally supervised by one of these experienced specialists.



GENERAL INFORMATION

Canada Livestock Services Ltd. (CLS) is a full service international marketing and consulting organization which specializes in livestock industry development worldwide, from conception to consumer, policy to processing, at all levels including individual enterprises, corporations, industry groups and governments. CLS will provide competitive bids on Canadian livestock technology. **Genetics** (semen, embryos or live animals) from all major domestic species (beef or dairy cattle, horses, swine, sheep, goats, ostriches, emus, llamas, wild boar, other alternate livestock). Our customers can take advantage of Canada's reputation for high-health livestock (maintained by both our cold climate and rigorously enforced health regulations).





Export services provided include animal election and purchase, export quarantine, export documentation, and all transportation logistics.

Production equipment and supplies sourced from a number of manufacturers, includes AI/ET, handling/feeding/ milking/housing equipment. CLS recognizes that for efficient and profitable livestock production our clients need the right technology, the right genetics, the right equipment and the right training to meet their specific needs in their specific environment. To ensure satisfaction, CLS assesses the clients' resources and matches their needs with the right technology.

CLS provides **consulting, training, technology transfer programs** and **project management**, directly or through associates, to clients, especially in developing countries. Consulting services include veterinary, animal nutrition, herd management, product processing and market strategy, **feasibility studies and business planning**, policy and program assessment and development.



Training programs include swine, beef and dairy cattle nutrition and management, breeding and genetics, embryo transfer, feed processing, pasture and grazing management, and marketing. Livestock Industry Overview Study Tours in Canada expose senior decision makers to the people, cattle, technology, programs, policies and institutions that make our Canadian industry competitive. Project management services include conducting feasibility and technical assistance studies, developing business plans and developing, implementing and managing production ventures. Canada Livestock Services Ltd. is actively exporting to or has export experience in the following countries or regions: China, Mexico, Australia, United Kingdom, South and Central America, Europe (incl. Central and Eastern), United States, Russia, Ukraine, Central Asian Republics, Africa, Middle East, Japan, Korea. Canada Livestock Services Ltd. Is interested in bidding on IFI and other procurement contracts for livestock related goods and services including genetics, equipment,

training and technical assistance. Although it is currently involved in two joint ventures in China, CLS does not actively seek joint ventures but is willing to explore serious joint venture opportunities or strategic alliances

The Canada Livestock Services Ltd. Team



Sydney Palmer

President – covers China, Mongolia, Former Soviet Union, SE Asia

Sydney is a third generation western Canadian purebred beef cattle breeder and has been exporting cattle, embryos and semen for over 20 years. His knowledge of breeding and marketing programs has proven invaluable to clients around the world.

5720-44 Street, Lloydminster, Alberta, T9V 0B6

Tel: +1(780) 808-2815 Fax: +1(780) 808-2816 Cell: (306) 821-1375

Email: sydney.palmer@canadalivestock.com

Robert (Bob) Prestage

Vice-President – covers Britain, Ireland, Western Europe, N. Africa, Korea, Japan and Brazil

Bob is a well-known Canadian breeder of purebred beef cattle and has over 30 years exporting experience. He specializes in the logistics of exporting, ensuring all protocols are met, all paper work is complete.

P.O. Box 1049, Camrose, Alberta, Canada T4V 4E7

Tel: +1(780) 672-3967 Fax: +1(780) 679-6297 Cell: (780) 679-7733

Email: Bob.prestage@canadalivestock.com



Pat Doyle

Business Manager

Pat has many years' experience managing commercial businesses in the Lloydminster area. He brings to CLS a thorough knowledge of the agriculture industry as well as skills in retailing, accounting and finance.

5720-44th Street, Lloydminster, SK Canada T9V 0B6

Tel: (780) 808-2815 Fax: (780) 808-2816 Cell: (780) 821-1410

Email: pat.doyle@canadalivestock.com

Cindy Zhu (Xu)

General Manager, Bei Jing, China

With many years work experience in China and a Master's degree in Economics from University of Saskatchewan and a Master's degree in Business Administration from American University in London, Cindy is well positioned to service the needs of our Chinese clients. Cindy fluency in Mandarin Chinese and English and her understanding of the local culture has helped CLS maintain its strong reputation for customer satisfaction in China.

Unit B, Section 2, Room502, Lan Chou Ming Zuo, Chao yang District, Beijing, China 100020

Tel: + 86 10 6553 8904 Fax: + 86 10 6553 8804

Email: cindyuofs@canadalivestock.com

Lou Chao (Luomeng)

Office Assistant, Interpreter

5720-44 Street, Lloydminster, AB, Canada T9V 0B6

Tel: (780) 808-2815 Fax: (780) 808-2816

Email: lou.chao@clsrecruitment.com